

MALLARD PASS

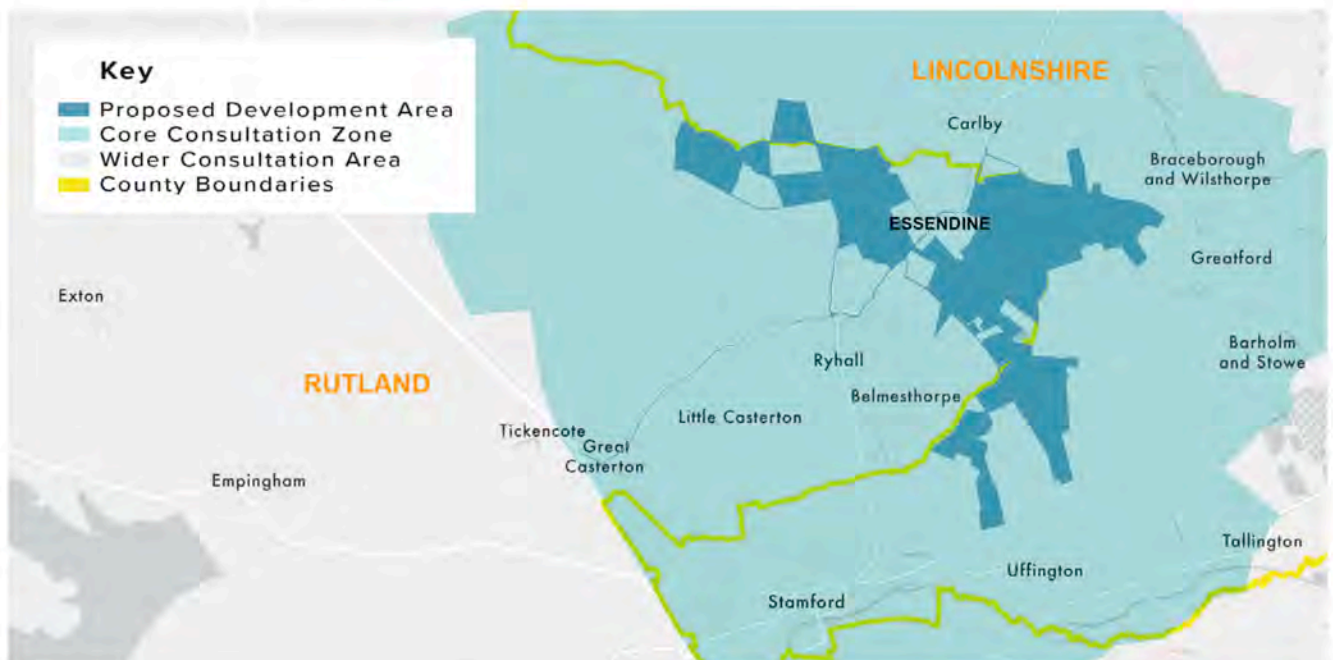
ACTION GROUP

YES to solar, NO to Mallard Pass!

URGENT: Public Consultation 26th May - 4th August 2022

Mallard Pass Solar Farm is proposed to be located across 2,238 acres on agricultural land either side of the East Coast Main Line, surrounding Essendine and adjacent to Carlby, Braceborough, Greatford, Barholm, Uffington, Belmesthorpe and Ryhall.

Mallard Pass Action Group (MPAG) was set up in December following huge concerns from many local residents. The first consultation received nearly 1,000 responses - raising issues of the sheer scale, local ecology and wildlife, loss of agricultural land, traffic, landscape & visual impact, recreation & amenity, and increased flood risk.



GET INVOLVED – WHY IS IT SO IMPORTANT?

- ▶ This is an NSIP (Nationally Significant Infrastructure Project) which means the decision will be taken by the Secretary of State for BEIS, not your local council. This shows the huge importance and scale of this decision.
- ▶ This is the only 'statutory' consultation in the process, and therefore the government's Planning Inspectorate and Mallard Pass both have to take account of public feedback.
- ▶ It is still 8 times bigger than the largest solar farm in the UK and should not be using valuable, productive agricultural land. Solar belongs on rooftops and brownfield sites.
- ▶ Ask yourself, do you trust this developer to look after local communities and the environment during the construction process and once in operation?
- ▶ Don't forget if approved it will take 2 years to build and will be in place for a minimum of 40 years affecting future generations, not just yourselves.

“It’s not a done deal” - *Alicia Kearns MP*

HAVE YOUR SAY – WHAT WE SUGGEST

Step 1: Read any consultation materials Mallard Pass has sent you, and if possible go online and visit their website for more detailed information at www.mallardpassolarfarm.co.uk.

MPAG will help distribute literature where possible to villages adjacent to the site. If you want to collect any literature, Essendine Village Hall, Ryhall Village Hall and Stamford Arts Centre will be open at certain times (see our website www.mallardpassactiongroup.com for more details). If you want to collect any literature, the following Community Access Points will be open:

Essendine Village Hall	Friday 10 June, 5pm to 7pm; Friday 17 June, 10am to 12pm.
Stamford Arts Centre	Monday to Saturday, 9am to 10 pm
Ryhall Village Hall	Monday to Friday, 9am to 9pm; Sat/Sun, 9am to 12 pm

Step 2: Attend an in-person or online event, or both to find out more:

Exhibition events	Saturday 25th June, 11am to 5pm	Essendine Village Hall
	Wednesday 29th June, 3pm to 8pm	Stamford Town Hall
	Thursday 30th June, 3pm to 8pm	Greatford Village Hall
	Friday 1st July, 12.30pm to 4.30pm	Ryhall Village Hall

*Note: * Do not fill in their feedback form while you are there, see below for details*

Webinars events	Friday 17th June, 11am to 1pm
	Tuesday 5th July, 6pm to 8pm

Note: Go to www.mallardpassolarfarm.co.uk for login details.

Step 3: After the above events, come along to a Mallard Pass Action Group Q&A at your local village hall. We will do a short presentation and then open the floor to questions.

Monday 4th July, 8pm	Uffington Village Hall
Wednesday 6th July, 8pm	Braceborough Village Hall
Thursday 7th July, 8pm	Carlby Village Hall
Friday 8th July, 8pm	Essendine Village Hall
Saturday 9th July, 10am	Greatford Village Hall
Sunday 10th July, 10am	Ryhall Village Hall

Note: Anyone can attend any village hall event. Duration between 60-90 mins, subject to questions.

Step 4: Having read and listened to all the feedback, write an email to Mallard Pass or post a letter giving your feedback. MPAG will provide more information and guidance in the coming weeks on the website and on Facebook.

 facebook.com/groups/mallardpassactiongroup

You can also contact us at mallardpassactiongroup@gmail.com

Note: *Please do not fill in their paper or online Contact Form as you won't be able to copy your local MP and elected councillors. Your voice needs to be heard by more than just Mallard Pass.

This view is taken from a popular Public Footpath and is of just one of the many fields that will be completely covered by unsightly solar panels, unless we stop this - WE MUST ACT NOW!